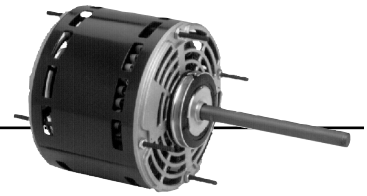


# Permanent Split Capacitor Direct Drive Fan & Blower 5.6" Diameter, Open Air Over

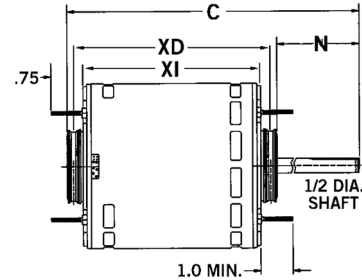


## APPLICATIONS:

Residential and commercial direct drive fans and blowers.

## FEATURES:

- Stud Extensions On Popular Models
- Designed for use with 370V Capacitors
- Class B Insulation
- 24" Leads
- Continuous Duty, Air Over
- Bearings Have All Angle Thrust System
- Reversible Rotation
- For Flex Mount, Order Catalog # 44; See Page 182
- Automatic Reset Thermal Overload Protector
- Connection and Capacitor Information Furnished in the Nameplate Data
- 2.5" Dia. Hub Rings Included
- All Angle Mount
- **Discount Symbol: DS-3HAC**



## Hub Ring Mount (2.5") except as noted, Without Capacitor

| HP      | RPM/ Spds. | Voltage | Catalog Number | Cap. MFD | Amps    | Shaft N | Base XD | Shell XI | Total C | Ship Wt. | Notes   | OEM |
|---------|------------|---------|----------------|----------|---------|---------|---------|----------|---------|----------|---------|-----|
| 1/4     | 1075/3     | 115     | 1863           | 7.5      | 3.5     | 5.0     | 5.4     | 4.9      | 10.4    | 10       |         |     |
|         | 1625/3     | 115     | 1690           | 10.0     | 2.7     | 6.0     | 4.7     | 4.1      | 11.1    | 11.6     |         |     |
|         | 1075/3     | 208-230 | 1971           | 7.5      | 1.5     | 5.0     | 5.4     | 4.9      | 10.4    | 9        |         |     |
|         | 1075/3     | 277     | 600            | 4.0      | 1.6     | 5.0     | 5.2     | 4.6      | 11.7    | 13       | 69      |     |
| 1/3     | 1075/3     | 115     | 1864           | 7.5      | 5.0     | 5.0     | 5.6     | 5.1      | 10.7    | 12       |         |     |
|         | 1625/3     | 115     | 1692           | 15.0     | 3.7     | 6.0     | 4.8     | 4.3      | 11.4    | 13       |         |     |
|         | 1075/3     | 208-230 | 1972           | 7.5      | 1.9     | 5.0     | 5.6     | 5.1      | 10.7    | 11       |         |     |
|         | 1075/3     | 277     | 601            | 4.0      | 2.2     | 6.0     | 5.5     | 5.0      | 11.9    | 14       | 69      |     |
|         | 1625/3     | 208-230 | 1693           | 5.0      | 2.1     | 4.5     | 5.1     | 4.6      | 10.7    | 13       |         |     |
| 1/3-1/8 | 825/2      | 208-230 | 5469           | 7.5      | 2.4     | 4.5     | -       | 5.3      | 9.8     | 17       | 72      |     |
| 1/2     | 825/2      | 208-230 | 8064           | 20.0     | 4.4     | 2.5     | 6.6     | 6.1      | 9.7     | 20       | 69      | LE  |
|         | 1075/3     | 115     | 1865           | 10.0     | 6.5     | 5.0     | 6.4     | 5.9      | 11.4    | 16       |         |     |
|         | 1625/3     | 115     | 1694           | 20.0     | 5.5     | 5.0     | 5.9     | 5.3      | 11.4    | 15.6     | A       |     |
|         | 1075/3     | 208-230 | 1973           | 10.0     | 2.9     | 5.0     | 6.2     | 5.7      | 11.7    | 17       |         |     |
|         | 1075/3     | 277     | 602            | 6.0      | 3.4     | 6.0     | 5.7     | 5.2      | 12.2    | 15       | 69      |     |
|         | 1075/3     | 115     | 1323           | 15       | 5.0     | 3.5     | -       | 4.8      | 8.3     | 12       | H11     | RH  |
| 1/2-1/6 | 1075/4     | 115     | 5460           | 10.0/7.5 | 7.3     | 5.5     | 5.9     | 5.3      | 11.3    | 20       | 72      |     |
|         | 1075/4     | 208-230 | 5461           | 10/5     | 3.6     | 5.0     | 5.9     | 5.3      | 10.8    | 15       | 72      |     |
| 3/4     | 1625/3     | 115     | 1696           | 15.0     | 8.6     | 6.0     | 5.9     | 5.4      | 12.4    | 20       |         |     |
|         | 1625/3     | 208-230 | 1697           | 10.0     | 4.4-4.2 | 6.0     | 5.9     | 5.4      | 12.4    | 19       | A       |     |
|         | 1075/3     | 115     | 8904           | 15.0     | 9.5     | 5.0     | 6.4     | 5.9      | 11.4    | 11       | 69      |     |
|         | 1075/3     | 208-230 | 8905           | 15.0     | 4.0     | 5.0     | 6.6     | 6.1      | 11.6    | 17       | 69      |     |
|         | 1075/3     | 277     | 5847           | 15.0     | 4.1     | 6.0     | 6.7     | 6.2      | 13.2    | 19       |         |     |
|         | 1075/4     | 115     | 3340           | 7.5      | 12.1    | 6.0     | 5.8     | 5.3      | 12.4    | 18       |         | CA  |
|         | 1075/5     | 208-230 | 8065           | 20       | 5.0     | 2.5     | 8.5     | 8.0      | 11.4    | 18       |         |     |
|         | 1075/4     | 115     | 6452           | 15.0     | 11.2    | 5.0     | -       | 5.8      | 10.8    | 18       | 69, H11 |     |
|         | 1075/2     | 208-230 | 5471           | 20/10    | 4.1     | 5.0     | 6.6     | 6.1      | 12.1    | 16       | 72      |     |
|         | 1075/3     | 460     | LX7930         | 20       | 2.3     | 2.5     | 5.8     | 5.3      | 8.9     | 17       |         |     |
| 3/4-1/5 | 1075/2     | 115     | 5470           | 20/10    | 8.1     | 5.0     | 6.6     | 6.1      | 11.6    | 17       | 72      |     |
| 1       | 1075/3     | 115     | 8906           | 20.0     | 12.1    | 5.0     | 6.6     | 6.1      | 12.2    | 22       | H17     |     |
|         | 1075/3     | 208-230 | 8907           | 20.0     | 5.6     | 5.0     | 6.6     | 6.1      | 12.2    | 22       | H17     |     |
|         | 1625/3     | 115     | 1699           | 25.0     | 11.1    | 6.0     | 6.4     | 5.9      | 12.9    | 22       | H7      |     |
|         | 1625/3     | 208-230 | 1700           |          | 5.1     | 6.0     | 5.9     | 5.3      | 12.4    | 20       |         |     |

CA = Carrier    LE = Lennox    RH=Rheem

Note 69: No Stud Extension

Note A: Class A Insulation

Note H7: 36" Leads, 2.25" Dia. Hubs With 2.5" Dia. Kit Included.

Note H11: Band Mount

Note H17: Class B Insulation, Studs Shaft Side Only, Ball Bearings

Note 72: Includes 4 Holes In Shell For Rheem Mount